

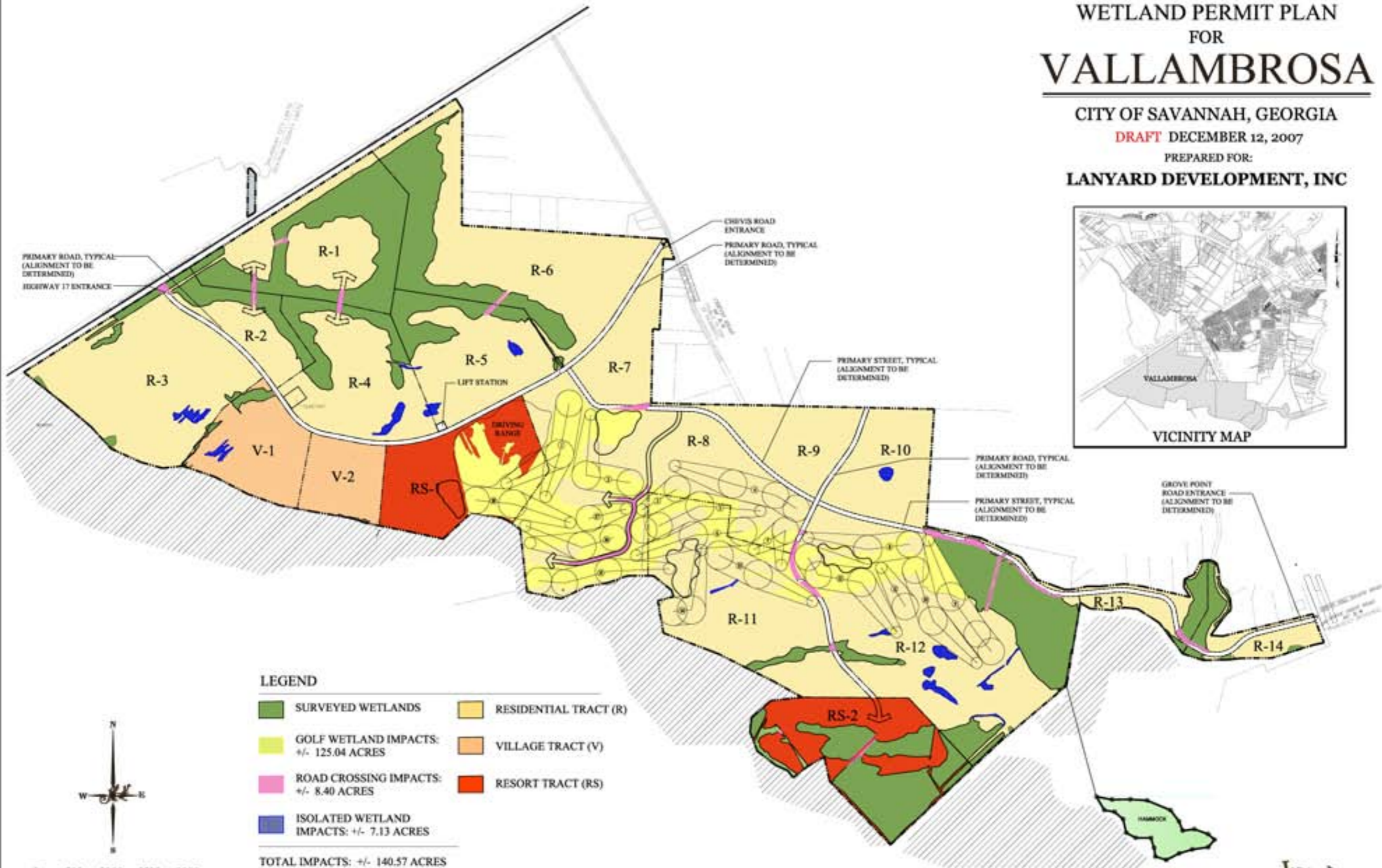
# WETLAND PERMIT PLAN FOR VALLAMBROSA

CITY OF SAVANNAH, GEORGIA









DRAFT DECEMBER 12, 2007

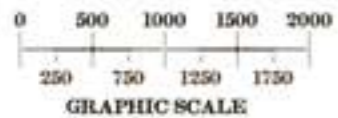
PREPARED FOR:

LANYARD DEVELOPMENT, INC



## LEGEND

- |   |   |
|---|---|
|  SURVEYED WETLANDS                           |  RESIDENTIAL TRACT (R) |
|  GOLF WETLAND IMPACTS:<br>+/- 125.04 ACRES   |  VILLAGE TRACT (V)     |
|  ROAD CROSSING IMPACTS:<br>+/- 8.40 ACRES    |  RESORT TRACT (RS)     |
|  ISOLATED WETLAND<br>IMPACTS: +/- 7.13 ACRES |   |
| TOTAL IMPACTS: +/- 140.57 ACRES   |   |
|  MARSH                                       |   |



*Wilmer-Jones-Keefe*  
L.L.C.  
ARCHITECTS ENGINEERS  
PLANNERS